

Seniors seeking an active lifestyle or the quiet comfort of a caring community will find both at **Capistrano Pines**.

Resident Services staff coordinate planned activities, wellness programs and social events to promote a healthy living environment and optimal quality of life.

At **Capistrano Pines**, you are never alone. Our coordinators have an array of resources. They work with community providers to tailor services to the specific needs of eligible residents.



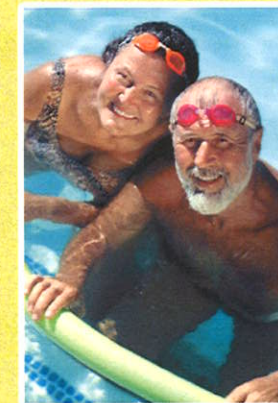
Mission: **Nevada H.A.N.D., Inc.** improves the lives of low-income individuals by providing affordable housing solutions and supportive services.

www.nevadahand.org



Capistrano Pines Senior Apartments
400 N. Major Avenue
Henderson, NV 89015

Capistrano Pines *Senior* Apartments



400 N. Major Avenue
Henderson, NV 89015
(702) 568-5181

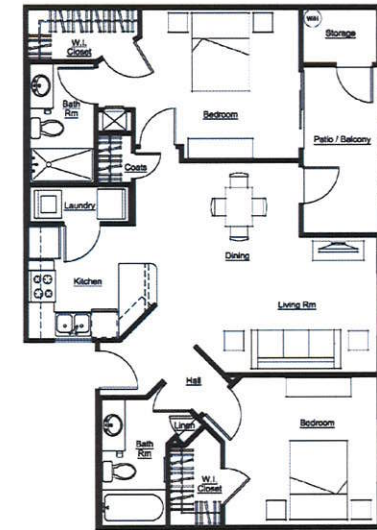


HAND Property Management Co.

An Affiliate of Nevada H.A.N.D., Inc.

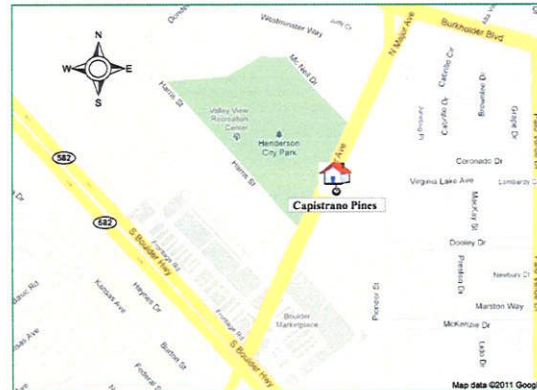


Capistrano Pines *Senior* Apartments



Capistrano Pines - Floor Plan 1
2 Bedroom 2 Bath
Approx. 1068 S.F.
Rent \$ _____

Capistrano Pines has made available the following services and amenities for your convenience and enjoyment.



Driving Directions:

Take Bruce Woodbury Beltway (CR-215) to E. Lake Mead Pkwy. Continue on E. Lake Mead Pkwy to Boulder Hwy. Head south (take a right) on Boulder Hwy to Major Ave. Head east (take a left) on Major Ave. Capistrano Pines is on the right hand side.

Neighborhood Amenities:

Smith's, HopeLink, Morrell Park, Citi Bank, Henderson Chamber of Commerce, Cuevas, Terrible's Town Casino, AutoZone and Nevada State Welfare Office

Home Features:

- Washer and gas dryer connections
- Private Balcony / Patio with storage
- Spacious floor plan
- Walk-in closets

Community Features:

- Computer center with free high speed internet
- Free transportation service
- Gated community with private access
- 24 hour emergency maintenance
- Covered parking and detached garages available
- On-site laundry facilities
- Community room with kitchen
- Sparkling pool and spa with covered patio
- Close to shopping and dining
- Pet friendly (under 20 lbs.)



Prices subject to change at owner's discretion.
Income restrictions do apply.