

Seniors seeking an active lifestyle or the quiet comfort of a caring community will find both at **Rochelle Pines**.

Resident Services staff coordinate planned activities, wellness programs and social events to promote a healthy living environment and optimal quality of life.

At **Rochelle Pines**, you are never alone. Our coordinators have an array of resources. They work with community providers to tailor services to the specific needs of eligible residents.



Mission: **Nevada H.A.N.D., Inc.**

improves the lives of low-income individuals by providing affordable housing solutions and supportive services.

[www.nevadahand.org](http://www.nevadahand.org)



Rochelle Pines Senior Apartments  
4285 Hildebrand Avenue  
Las Vegas, NV 89121

# Rochelle Pines *Senior* Apartments



4285 Hildebrand Avenue  
Las Vegas, NV 89121  
(702) 795-0771

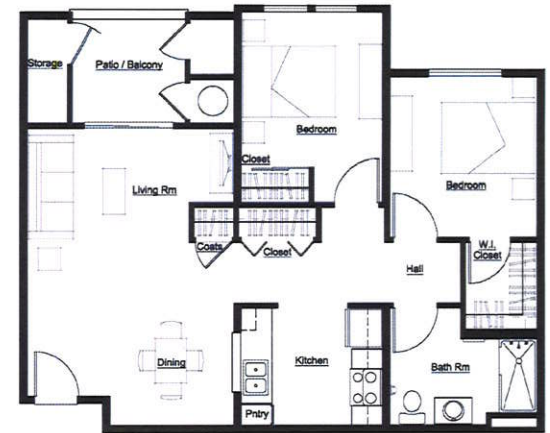
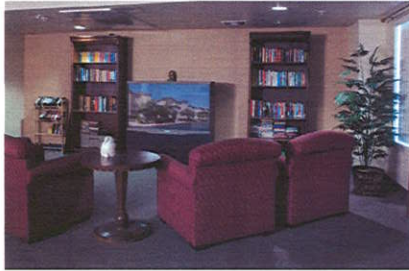


**HAND Property Management Co.**

An Affiliate of Nevada H.A.N.D., Inc.



# Rochelle Pines *Senior* Apartments



Rochelle Pines - Floor Plan  
2 Bedroom 1 Bath  
Approx. 882 S.F.  
Rent \$ \_\_\_\_\_

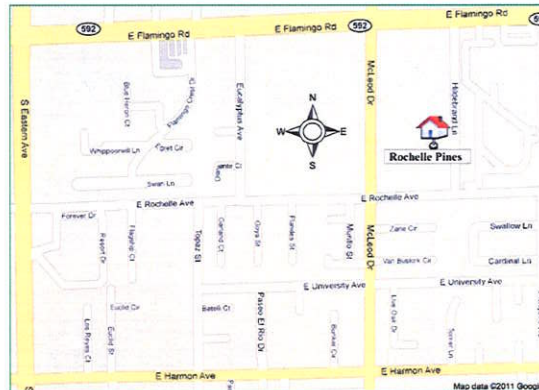
Rochelle Pines has made available the following services and amenities for your convenience and enjoyment.

## Home Features:

- Central heating and air conditioning
- Spacious closets
- Patios / Balconies
- Walk-in shower in select units

## Community Features:

- Convenient access to public bus lines
- Computer center with free high speed internet
- 24 hour emergency maintenance
- Controlled access entry
- Covered parking available
- Sparkling pool and spa
- Fitness center / Beauty salon
- Library / Game room
- Elevator access
- Pet friendly (under 20 lbs.)
- Free laundry



## *Driving Directions:*

From Eastern Avenue & Flamingo Road  
head east on Flamingo Road  
Hildebrand Lane is one block east of McLeod  
Take right on Hildebrand Lane  
Rochelle Pines is on right hand side

## *Neighborhood Amenities:*

Food4Less, Smith's, Walgreens Pharmacy,  
Big Lots, Wal-Mart Supercenter, NV State Bank,  
Wells Fargo Bank, Community Multicultural Center,  
EMSI, Desert Springs Hospital and SW Medical



Prices subject to change at owner's discretion.  
Income restrictions do apply.